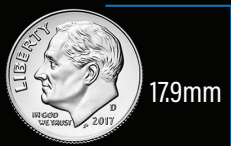




# ION™

FACET SCREW SYSTEM

Which would  
your patients  
choose?



17.9mm



10mm

**SURGENTEC ION  
FACET SCREW**



35mm

**TRADITIONAL  
FACET SCREW**



40mm

**INTERSPINOUS  
SPACER**



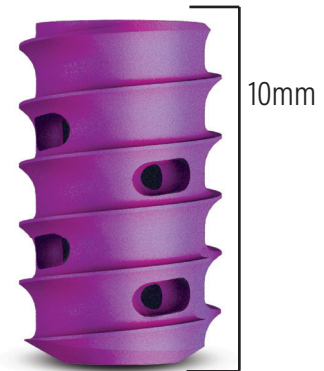
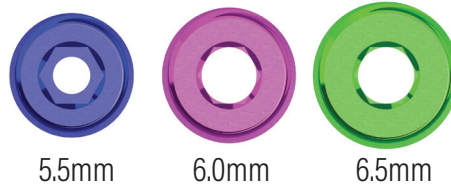
45mm

**TRADITIONAL  
PEDICLE SCREWS**



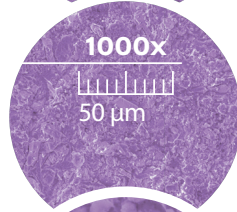
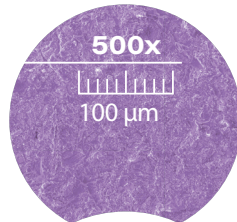
## Screw Sizes

All screws are 10mm in length but come in 5.5mm, 6.0mm or 6.5mm diameter to provide an option for a wide variety facet joints.

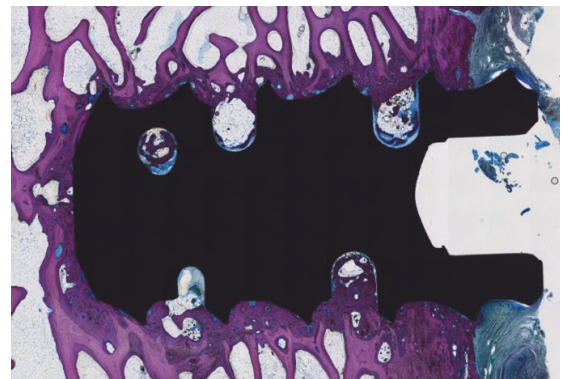


# Nanotex™ Surface Technology

Creates An Ideal Surface For Bone Integration



## Histology Review



Ovine spine study at three (3) months revealed mature bone formation to Nanotex surface with no delamination

## Blood Wicking



The hydrophilic surface created by Nanotex technology takes advantage of ionic bonds to create a hydrophilic surface that attracts and holds blood, BMA and other fluids that contain key growth factors necessary for osseointegration

